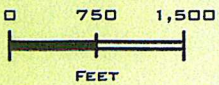


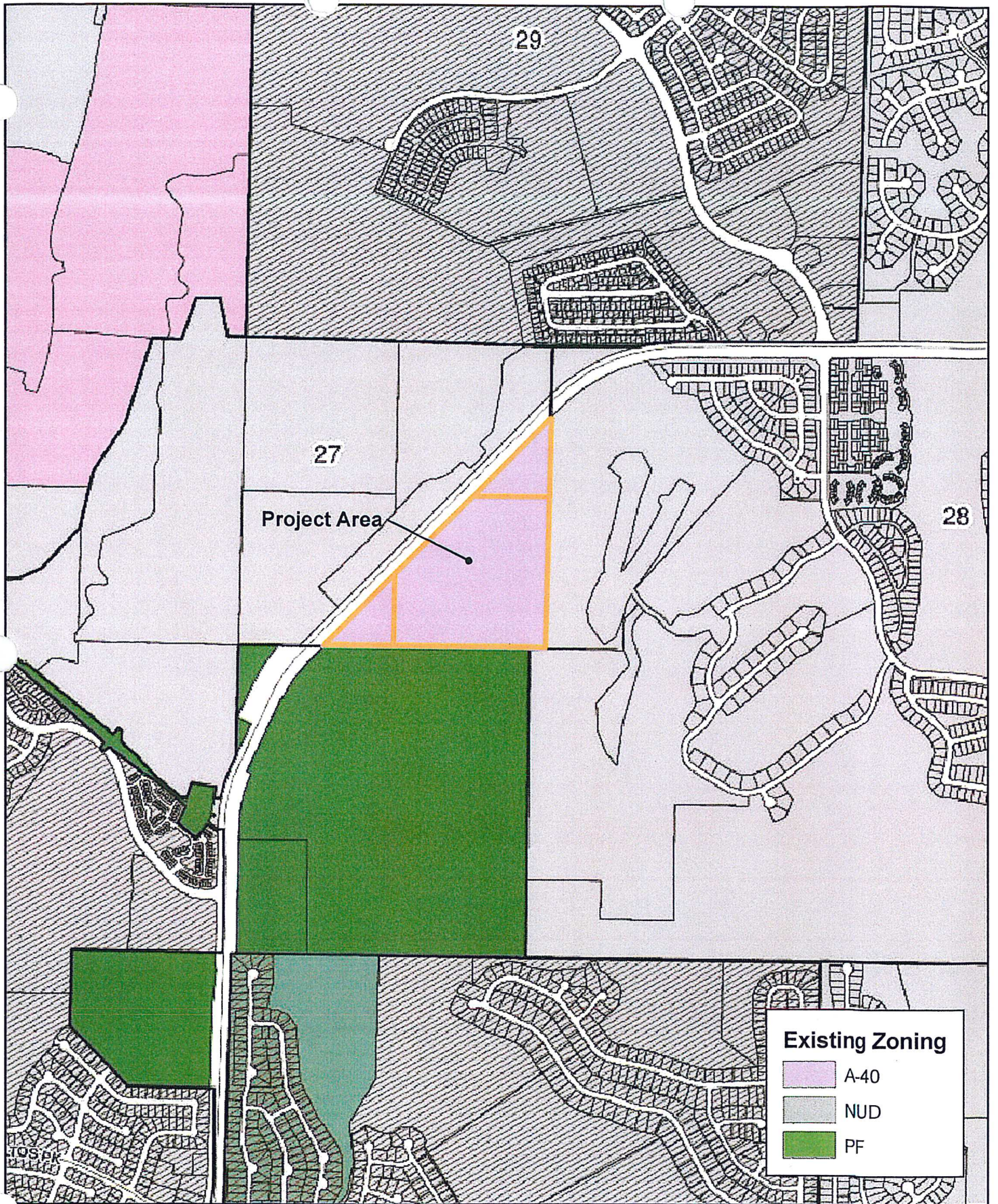
Source: Esri, DigitalGlobe, GeoEye, i-cubed, USDA, USGS, AEX, Getmapping, Aerogrid, IGN, IGP, swisstopo, and the GIS User Community






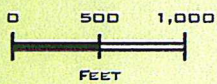
Vicinity Map
 Vista Blvd. Parcels
 April, 2014



WOOD RODGERS
 DEVELOPING INNOVATIVE DESIGN SOLUTIONS
 5440 Reno Corporate Drive Tel: 775.823.4068
 Reno, NV 89511 Fax: 775.823.4066

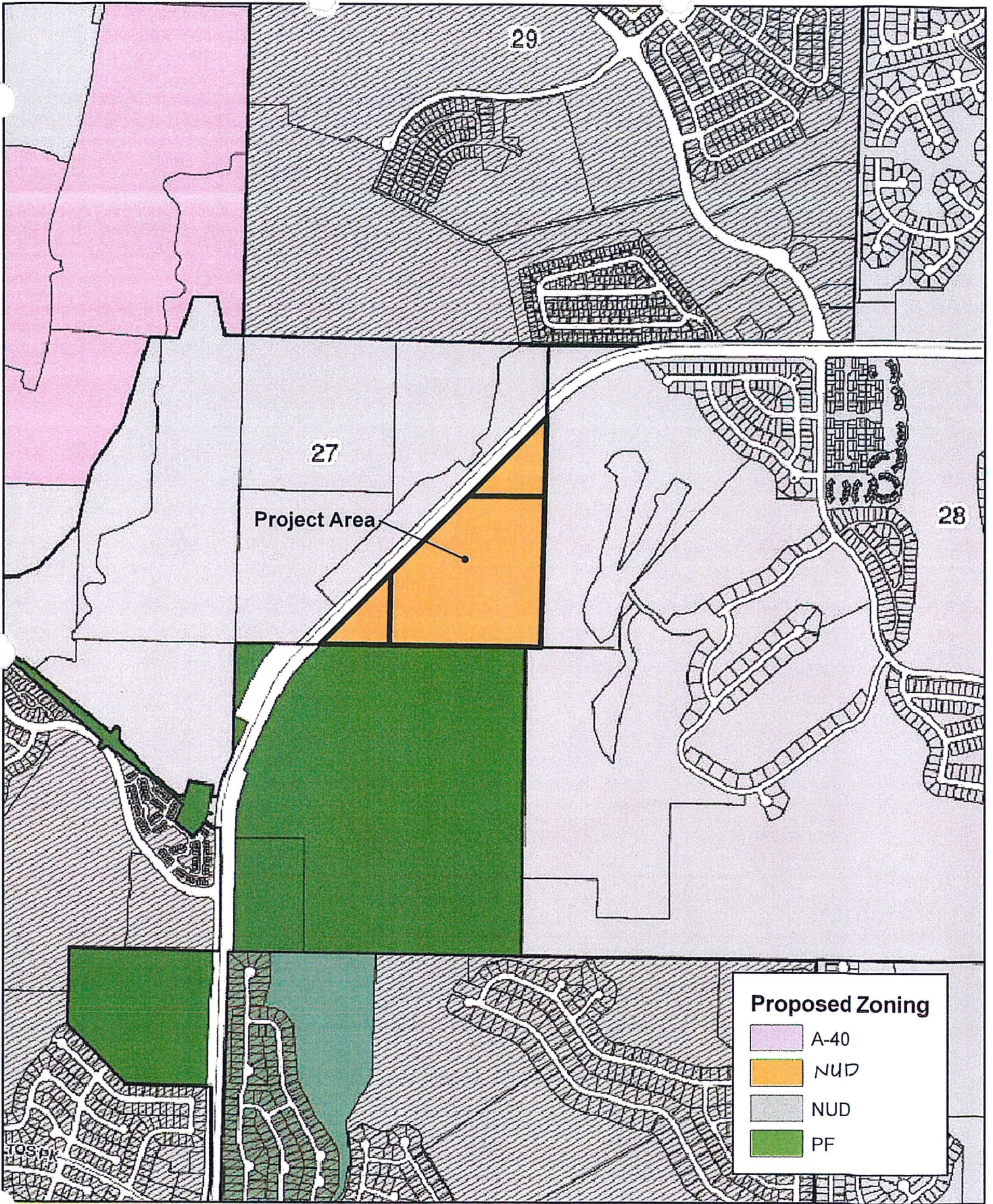


| Existing Zoning | |
|---|------|
|  | A-40 |
|  | NUD |
|  | PF |



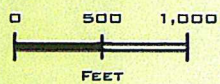
Existing Zoning
Vista Blvd. Parcels
April, 2014


WOOD RODGERS
DEVELOPING INNOVATIVE DESIGN SOLUTIONS
5440 Reno Corporate Drive Tel: 775.823.4068
Reno, NV 89511 Fax: 775.823.4066



Proposed Zoning

- A-40
- NUD
- NUD
- PF



Proposed Zoning
 Vista Blvd. Parcels
 April, 2014


WOOD RODGERS
 DEVELOPING INNOVATIVE DESIGN SOLUTIONS
 5440 Reno Corporate Drive Tel: 775.823.4068
 Reno, NV 89511 Fax: 775.823.4066